

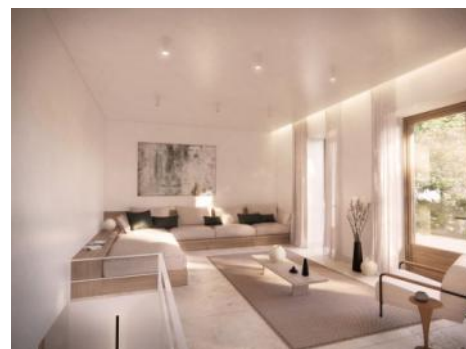
Sineu
Reference 121219




PORTA MALLORQUINA®
Your home. Our passion.

New construction project for a traditional village house in Sineu with pool and large garden

constructed area:	277 m ²	energy certificate:	in process
plot area:	308 m ²		
bedrooms:	3		
bathrooms:	4		
sea view:	-	price:	€ 1,090,000.-



Sineu

Reference 121219



Details:

The village of Sineu is situated in the enchanting central area of the island which, with its traditional windmills and old stone walls, will always magically attract. This village house is located in one of the loveliest town-squares of Sineu and exudes timeless elegance with its successful combination of traditional details and modern elements.

With large floor-to-ceiling windows overlooking the garden, the interior of the house is flooded with natural light creating a radiant ambience. The main house and the very large garden each have their own separate entrances, and the garden area is also accessible from the garage and from a utility room.

In the green jewel of a garden, construction of a pool with a terrace and an outdoor bathroom is foreseen.

On the ground floor of the house there is a spacious living/dining area with direct access to the garden and to a covered terrace, with the separate kitchen and a utility room next to the dining room. From here stairs lead up to the sleeping area on the upper level with 3 bedrooms, each with its own bathroom. The master bedroom also has an integrated dressing area and a bathtub and shower. Two of the bedrooms have access to a balcony which leads to the terrace.

A special highlight of the house is the 12 sqm bodega in the interior, perfect for wine storage. Further features include natural: stone floors with underfloor heating on the ground floor and wooden floors on the upper level.

The house is powered by an air-heat pump running on its own solar power, with Integrated air conditioning providing additional comfort. This innovative approach makes the house a zero-energy home which was renovated with the aim of conserving resources in terms of sustainability.

This exceptional property now offers a successful combination of traditional charm combined with new technology.

Sineu

Reference 121219



Location & surrounding area:

Sineu is geographical the central village of Majorca and is situated in the region Es Plà. One of the attractions is the church Nuestra Senyora de los Angeles or the convent Convento de las Monjas. The main attraction is the weekly cattle and art market. Sineu has 3000 inhabitants.

Sineu
Reference 121219



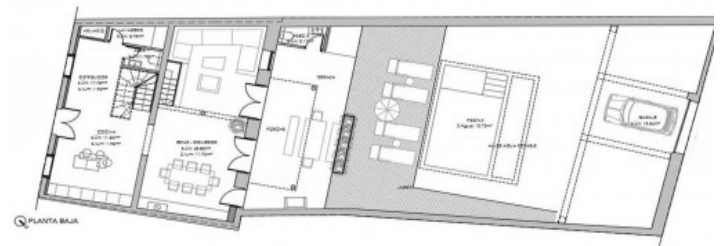
Garden area with pool



Facade



Living area



Dining area



Kitchen



Bedroom

All information is correct to the best of our knowledge. Errors and prior sale excepted. This prospectus is purely for information purposes. Only the notarized deed of sale is legally binding.

Sineu

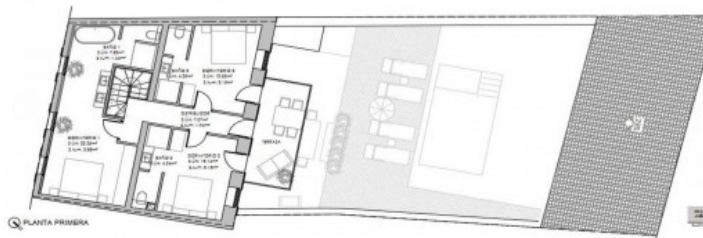
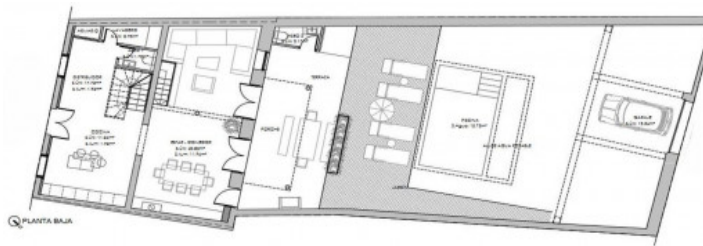
Reference 121219



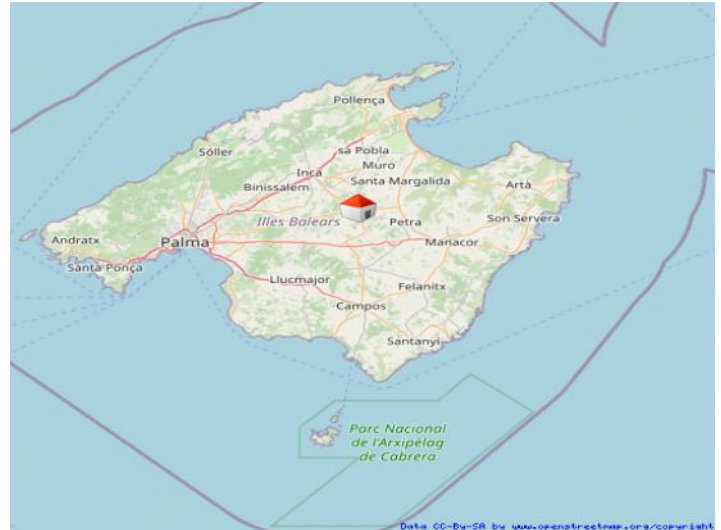
On of 3 bedrooms



BModern bathrooms



Floorplan



Sineu

All information is correct to the best of our knowledge. Errors and prior sale excepted. This prospectus is purely for information purposes. Only the notarized deed of sale is legally binding.