

Paseo Marítimo

Reference 121128E




PORTA MALLORQUINA®
Your home. Our passion.

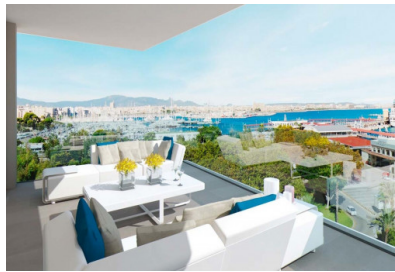
Newly-built designer apartment with views of the harbor and over the bay of Palma

constructed area:	138 m ²	swimming pool:	✓
bedrooms:	3	energy certificate:	in process
bathrooms:	2		
balcony/terrace:	✓		
sea view:	✓	price:	€ 2,520,000.-



Paseo Marítimo

Reference 121128E



Details:

Just 3 minutes from the center, nestled between trees and the sea, this luxury residential complex is being built on the prestigious Paseo Marítimo.

The complex combines modern design, a fantastic view with a great quality of life. The total of 15 luxury apartments a large common area with plenty of terrace space, a stylish outdoor pool, a spa area with fitness, sauna and indoor pool. Furthermore, there is a large underground garage distributed over 3 levels with generous parking spaces for each unit.

Due to the large window fronts, all apartments offer plenty of light. Each apartment has its own spacious terrace. The apartments have excellent sea / harbor views as well as a romantic view of Palma, the bay and the famous cathedral.

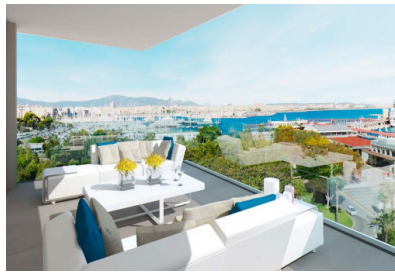
The apartment is located on the third floor and offers you on one level 3 bedrooms, 2 bathrooms (one en suite), an utility and storage room, as well as the open living and dining area with integrated American designer kitchen and access to a covered terrace with great views of the harbor, the city and Palma's bay.

Other features:

- Underfloor heating in all rooms
- Air conditioning (hot/cold) in the living area, kitchen and bedrooms
- Siemens kitchen appliances
- Hansa brand faucets
- KNX system, visualization of all rooms

Paseo Marítimo

Reference 121128E

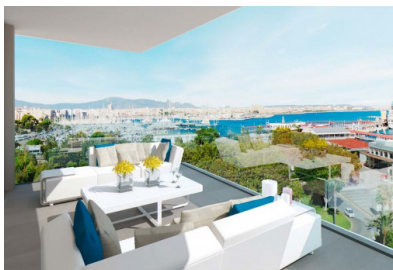


Location & surrounding area:

The Paseo Marítimo forms the borderline from the capital Palma towards the water and extends on about 6 kilometres from the military port of Porto Pi in the west, along the historic centre, the antique pier, the cathedral till the fisher harbour of Portixol in the east. Whilst some people take the bicycle or the roller blades, others are jogging or simply walk; all of them are enjoying meanwhile the fresh breeze on the waterfront. The promenade of Palma is one of the favoured meeting points for the people of the island and the life not only vibrates during the day. The attractive nightlife offers different kind of hip dancing clubs, fancy pubs, coffee shops and restaurants for each taste. Sunny residential apartment blocks, south orientated, with views to the marinas with its floating yachts, define the image of the Paseo Marítimo.

Paseo Marítimo

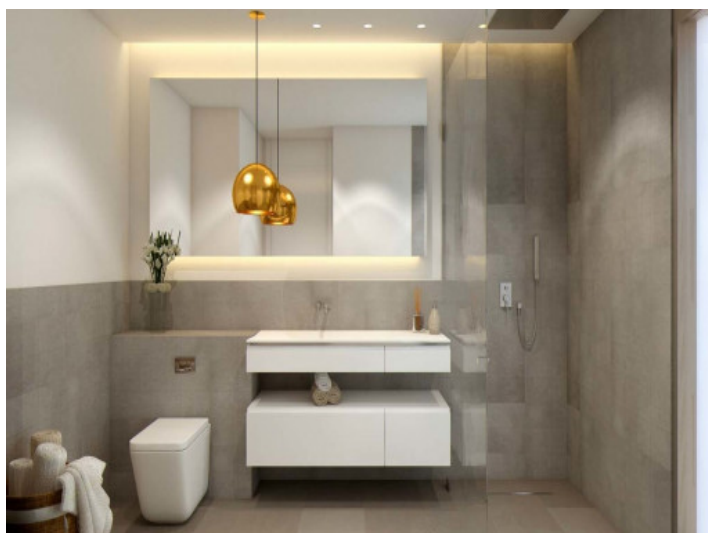
Reference 121128E



Living area



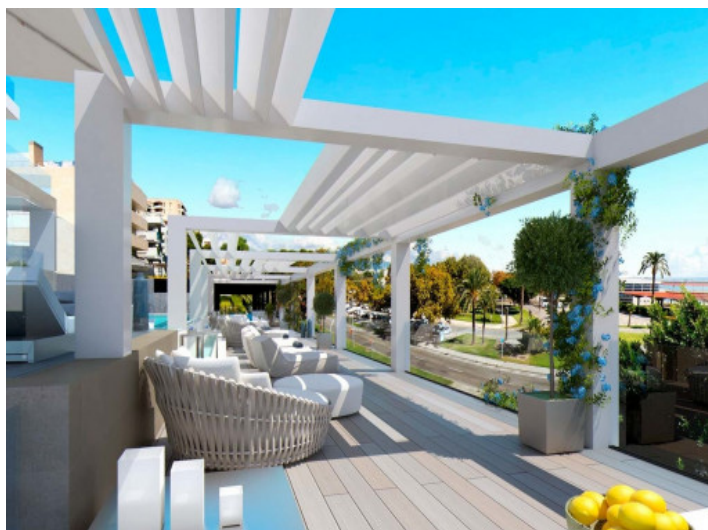
Dining area and kitchen



Bathroom



Pool area



Pool terrace



Street view

All information is correct to the best of our knowledge. Errors and prior sale excepted. This prospectus is purely for information purposes. Only the notarized deed of sale is legally binding.

PORTA MALLORQUINA • C./ CONQUISTADOR 8, 07001 PALMA
TEL. +34 971 698 242 • INFO@PORTAMALLORQUINA.COM