

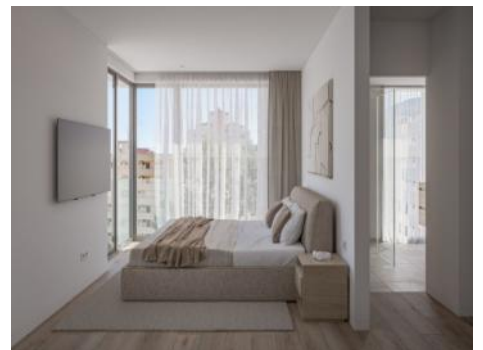
Cala Mayor

Reference 120364I



Newly-built penthouse with beautiful south-west facing rooftop terrace very close to the beach in Cala Mayor

constructed area:	102 m ²	swimming pool:	✓
bedrooms:	2	energy certificate:	b
bathrooms:	2		
balcony/terrace:	✓		
sea view:	-	price:	€ 737,000.-



Cala Mayor

Reference 120364I



Details:

This fantastic new building project is now under construction on the outskirts of Palma de Mallorca, situated on the bay of Cala Mayor and overlooking the sea and the Royal Marivent Palace. It will combine modern, urban living with the highest architectural standards and sustainable construction methods.

A total of 23 apartments are foreseen, to be constructed using selected, high-quality, durable materials from renowned brands and manufacturers. The apartments radiate the Mediterranean lifestyle, and feature a bright and friendly design, with surfaces in warm, bright natural tones. Natural-stone, wood, and soft finishes blend harmoniously together, with all integrated fittings and kitchens incorporated seamlessly in design and functionality into a high-quality overall concept.

This particularly lovely penthouse, with a constructed area of 97,51 sqm, consists of 2 bedrooms, each with an en-suite bathroom, a guest WC, and an open living/dining area with an integrated American kitchen which gives access to a 37,54 sqm, partially covered terrace offering breathtaking views over the bay of Cala Mayor.

The highlight of this exceptional property is presented by a private roof terrace, accessible only from the apartment. It presents amazing sea views and could be fitted with diverse features including a whirlpool if desired.

In the central part of the complex there is a spacious pool area with a sun terrace surrounded by lush gardens.

Further features of this very this high-quality offer include an underground parking space and a storage room.

Cala Mayor

Reference 120364I



Location & surrounding area:

The coastal region of Cala Mayor is one of Mallorca's oldest holiday areas and adjoins the harbour of Porto Pi. The district is very central, and situated only a few minutes by car from the centre of Palma. Its close proximity to Palma makes the area interesting as a holiday destination all year round. Apart from that Cala Mayor has easy access to the exclusive south-west region of the island with Puerta Portals and Port Adriano, Palma city and the mountains of Genua.

Cala Mayor's absolute highlight, however, is its beach of the same name. Due to its protected location the water is clear and turquoise-blue, and the beach has the finest white sand. This wonderful beach has been awarded the blue flag and is very popular with families.

Cala Mayor is also a lively place with many restaurants and shops, and is well-known for its night life.

Additionally diverse historic attractions such as the old fortress Castillo Bellver, from where early birds can enjoy the wonderful sunrise over the bay of Palma, are very close by. Also in the area there are very good international schools.

In part due to continual renovation work, in recent years the district has developed into a popular area for investment.

Cala Mayor

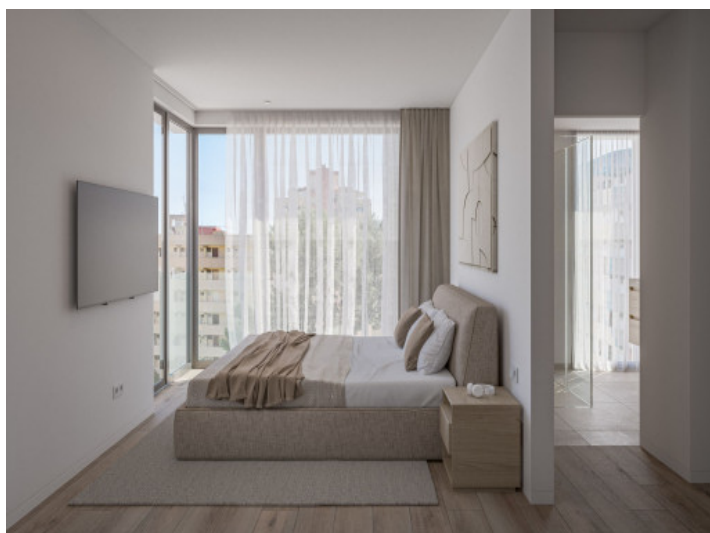
Reference 120364I



Community pool



Modern Kitchen



Mastersuite



Second bedroom



Bathroom en Suite



Bathroom

All information is correct to the best of our knowledge. Errors and prior sale excepted. This prospectus is purely for information purposes. Only the notarized deed of sale is legally binding.

Cala Mayor

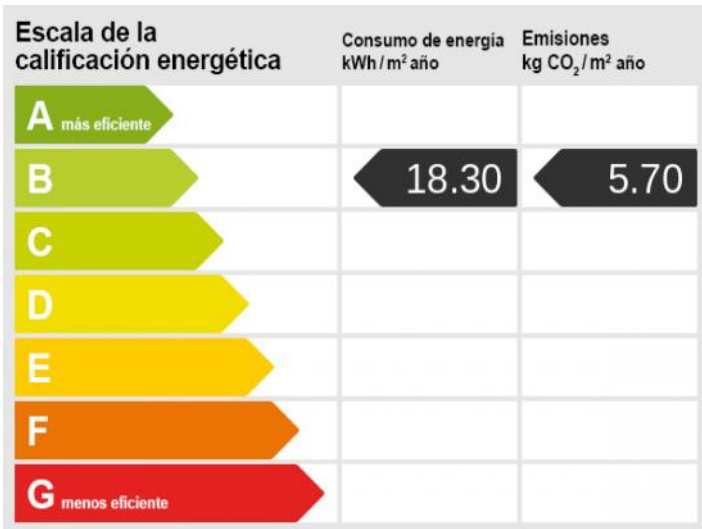
Reference 120364I



Facade



Facade



Energy certificate

All information is correct to the best of our knowledge. Errors and prior sale excepted. This prospectus is purely for information purposes. Only the notarized deed of sale is legally binding.